



STEPHENSON BROWNE

Skylark Row, Baldwins Gate

ST5 5FG

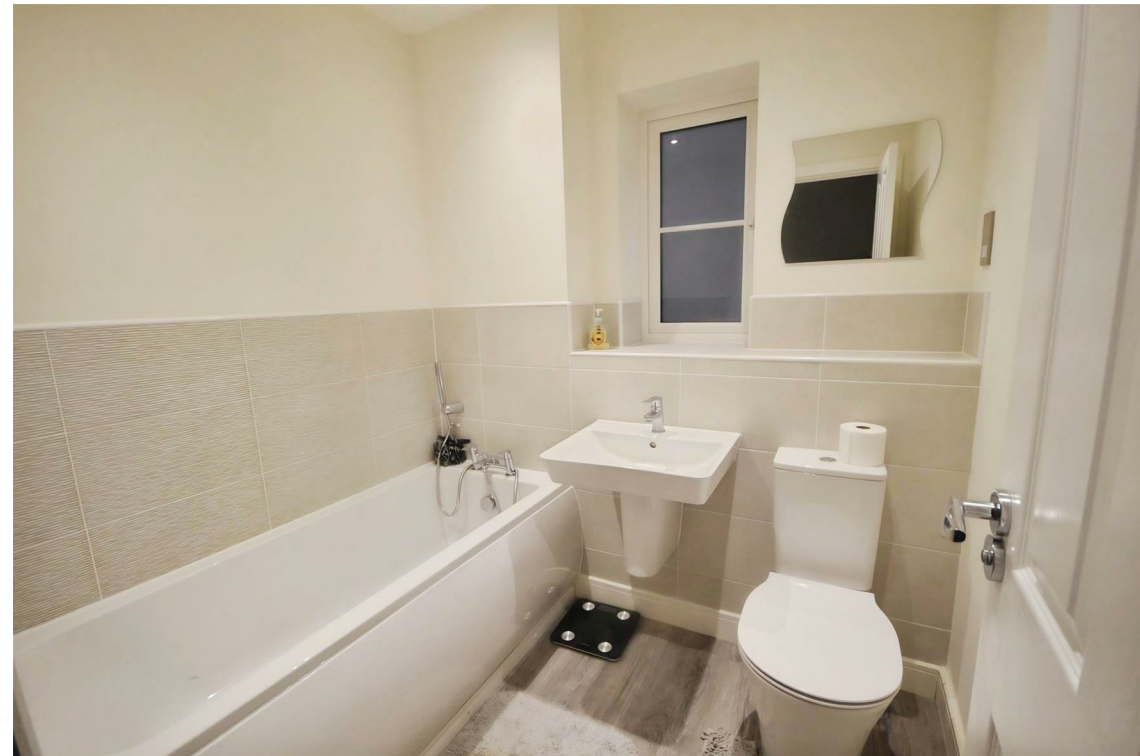
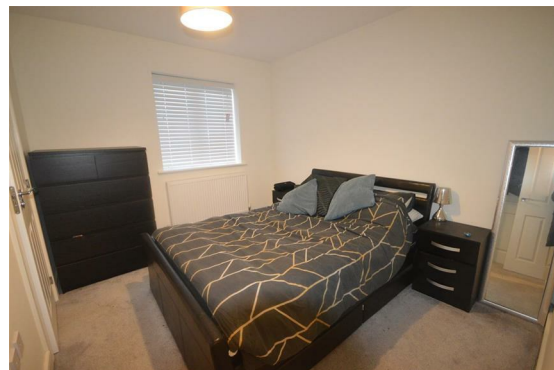


£950 PCM

Description

Great location in the heart of Baldwins Gate in an attractive development. A modern two bed property offering a front facing lounge, with kitchen dining area to the rear with patio doors. The kitchen includes integrated fridge/freezer, oven and hob and a washing machine.

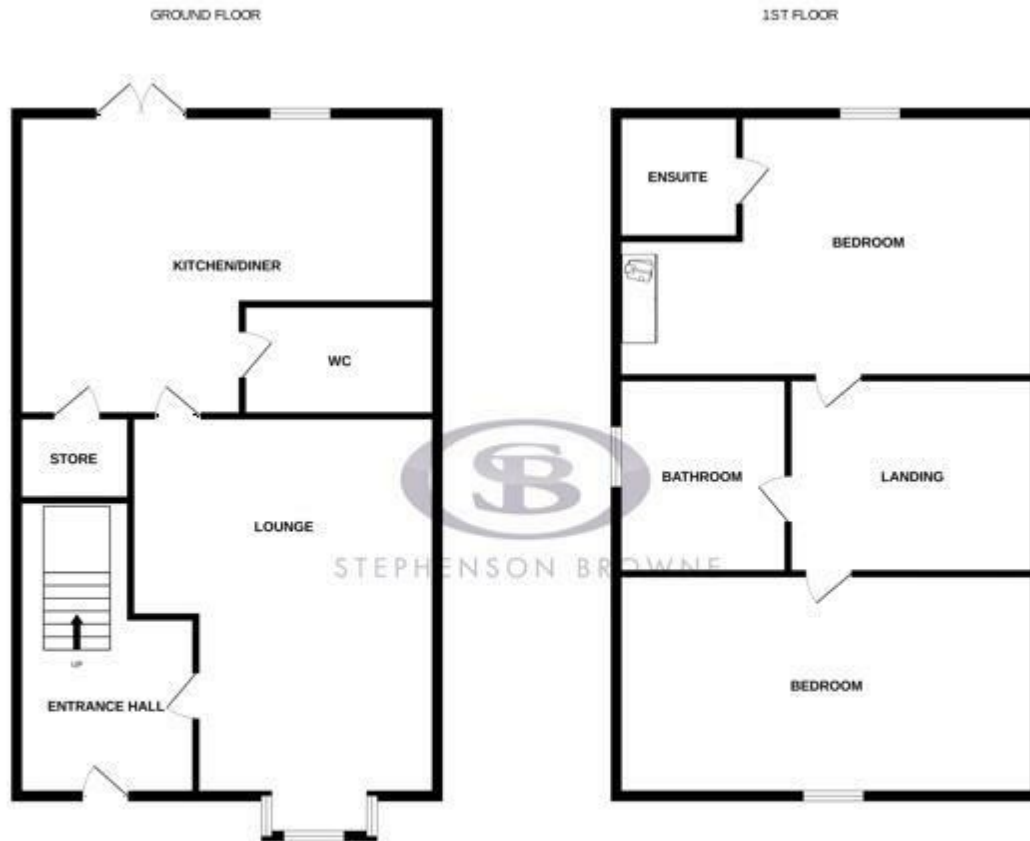
Downstairs cloakroom. To the first floor is two double bedrooms with the rear bedroom offering an ensuite and fitted wardrobes. A lawned garden to the rear and two parking spaces to the front of the property. EPC Rating B. Council Tax Band C.



Viewing

Please contact our office using the details provided on the final page if you are interested in booking a viewing or require further information.

Floorplans



Whilst every attempt has been made to ensure the accuracy of the description contained here, measurements of doors, windows, stairs and any other items are approximate and no responsibility is taken for any error, omission or mis-statement. This plan is for illustrative purposes only and should be used as such by any prospective purchaser. The services, systems and appliances shown have not been tested and no guarantee as to their operability or efficiency can be given. Made with Blueprints 1/2024

Area Map



Energy Efficiency Rating	
	Potential
Very energy efficient - lower running costs	
(92 plus) A	96
(81-91) B	83
(69-80) C	
(55-68) D	
(39-54) E	
(21-38) F	
(1-20) G	
Not energy efficient - higher running costs	
England & Wales	EU Directive 2002/91/EC

Environmental Impact (CO ₂) Rating	
	Potential
Very environmentally friendly - lower CO ₂ emissions	
(92 plus) A	
(81-91) B	
(69-80) C	
(55-68) D	
(39-54) E	
(21-38) F	
(1-20) G	
Not environmentally friendly - higher CO ₂ emissions	
England & Wales	EU Directive 2002/91/EC

NOTICE: Stephenson Browne for themselves and for the vendors or lessors of this property whose agents they are give notice that: (1) the particulars are set out as a general guideline only for the guidance of intending purchasers or lessees, and do not constitute, nor constitute part of, an offer or contract; (2) all descriptions, dimensions, references to condition and necessary permissions for use and occupation, and other details are given in good faith and are believed to be correct but any intending purchasers or tenants should not rely on them as statements or representations of fact but must satisfy themselves by inspection or otherwise as to the correctness of each theme; (3) no person in the employment of Stephenson Browne has any authority to make representation or warranty whatever in relation to this property. (4) fixtures & fittings are subject to a formal list supplied by the vendors solicitors. **Referring to:** Move with Us Ltd **Average Fee:** £123.64

T: 01782 625734 opt 2 E: newcastlelettings@stephensonbrowne.co.uk

www.stephensonbrowne.co.uk